



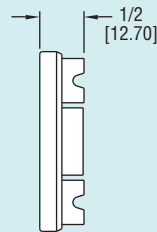
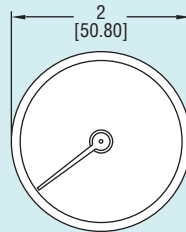
Series  
ST

# Surface Mount Thermometer

2" Dual Scale Dial,  $\pm 2\%$  Full Scale Accuracy



Scan here  
to watch  
product video



Thermometers,  
Dial

Measure the temperature of boilers, air ducts, motors, bearings, furnaces or other surfaces with Series ST Surface Mount Thermometers. Dual magnet design allows easy mounting on any ferrous surface. Bi-metallic thermal sensing coil provides quick temperature measurement with  $\pm 2\%$  full-scale accuracy.

## APPLICATIONS

Manifolds, platens, boilers, air ducts, furnaces, engines, motors, bearings, enclosures, cabinets, drums, plumbing, piping, refrigerators, and other ferrous surfaces.

Model	Range
ST250	0 to 250°F (-20 to 120°C)
ST500	0 to 500°F (-20 to 260°C)
ST750	50 to 750°F (10 to 400°C)

## SPECIFICATIONS

**Housing Material:** Aluminum.

**Accuracy:**  $\pm 2\%$  full-scale.

**Sensing Element:** Bimetal coil.

**Dial Size:** 2" (5.08 cm).

**Response Time:** Approximately one minute.

**Mounting:** Two Alnico magnets on back.

**Height:** 1/2" (1.27 cm).

**Weight:** 2 oz (56.7 g).